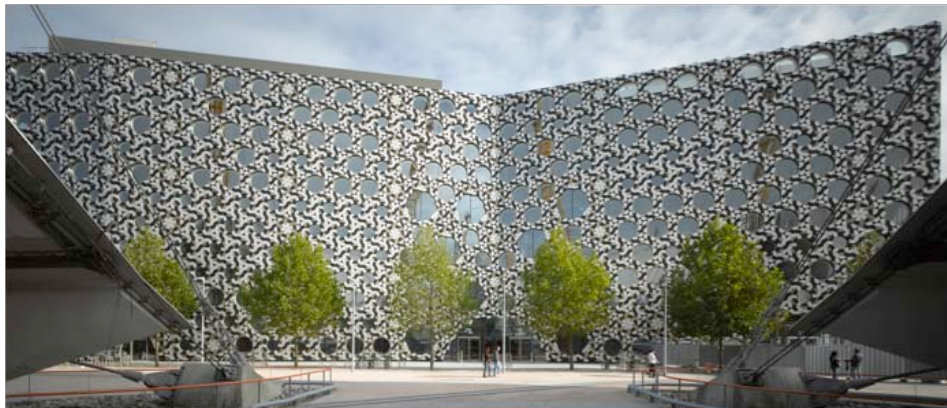


Doing Different Things & Doing Things Differently
The New Ravensbourne

Chris Thompson
Senior Advisor for Enterprise + Innovation
Consultant for Media and Technology Sector Growth



My Creative Journey



Arts
& Business



Ravensbourne History



The New Ravensbourne
Philosophy
Ethos
Design

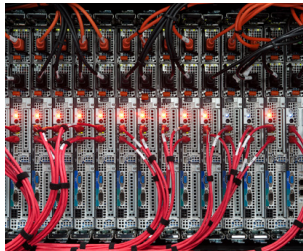
Change

Positive and negative experience

Business vs education expectation

Ambition vs status quo

Design forcing and enabling behaviour change
Integration
Convergence
Mobile working



Impact of technology and design

Joined up working

Cross disciplinary

Site wide licensing

Student empowerment

Barriers and IT support

Here's an example of joined up working



The new learning experience

How is it different?

What is taught?

The impact - grades / employability / satisfaction / future student recruitment



The Student Experience

Multi-disciplinary projects and groups

- I cinna
- Samsung
- Studio6
- Cisco network
- Adobe
- Mozilla
- Incubator



Eco Incubator
What?
Why?
How?



Partnership + Industry

Adobe

Cisco / NVI

Apple

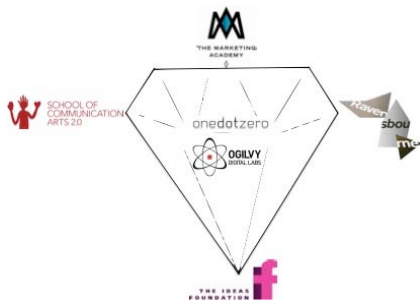
Ogilvy - BA and Rough Diamond

Digital Advisory Board

GLL

Barclays

Samsung



NVI Overview



Innovation



Growth

Financing
Training
Networking
Mentoring
Events
Incubation
Business Support

NVI PARTNER INITIATIVES

- Birmingham - iCentrum
- Greenwich / Ravensbourne
- JaNet - Research Network

CISCO CONTENT & EVENTS

- Cisco BIG Awards (Prize)
- Global Exchange for Growth
- Cisco Entrepreneur Institute
- Joint Research Programmes

CISCO INNOVATION PLATFORM

CLOUD COMPUTING

NETWORK

COLLABORATION

VIDEO

Regional importance
iCity
Digital Enterprise Greenwich
Smart Cities exemplar



What Next?

